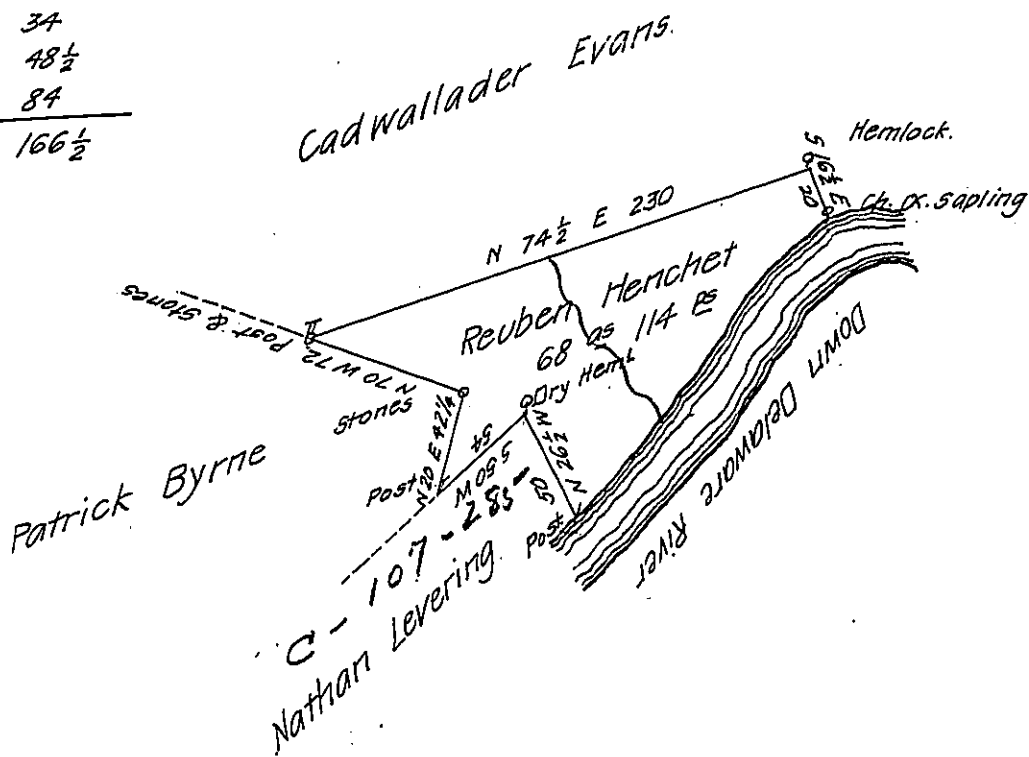


FORM NO 1.

Courses & distances
Down Delaware

1	5	56	W	34
2	5	33	W	48½
3	5	43	W	84
				166½



In Pursuance of a Warrant dated December 12th 1792 Surveyed May 15th
 1803 to Reuben Henchet the above described tract of land situate on the West side
 of Delaware River in (late Northampton now) Wayne County Containing Sixty eight
 Acres one hundred fourteen perches and Allowance of Six P. Cent.

E. Kellogg D.S.

To Samuel Cochran Esq^r

Surveyor Gen^l

IN TESTIMONY that the above is a copy of the original remaining on file in
 the Department of Internal Affairs of Pennsylvania, made
 conformably to an Act of Assembly approved the 16th day of
 February, 1833, I have hereunto set my Hand and caused
 the Seal of said Department to be affixed at Harrisburg,
 this teeth day of March 1908

Nevoy Powell
 Secretary of Internal Affairs.